

NAREX WIDE UPDATE REPORT OCTOBER 2018

Author and responsible person: Prof. Dr. Konstantin Lenz
Country Manager Commodities Germany
Konstantin.Lenz@nasdaq.com
Phone: +49 177 328 85 28

Index Version: NAREX WIDE 18/10
Changes coming in effect: October 1st, 2018
Report Version: 18/10/1.0
Date of Issue: October 1st, 2018
Index Calculator: StormGeo

Summary

On October 1st, 2018, the NAREX WIDE (NAsdaq REnewable index WInd (DE) Germany) was adjusted to the last reported capacity and wind installation data with the Version 18/10 replacing index version 18/04. The total installed capacity increased by 1505 MW or 2.7%. The relation of offshore capacity on the total installed capacity reduced from 9.59% to 9.34%. It was the first time, that StormGeo did the NAREX index update in their role as new index calculation agent.

Parameters:

Total installed wind power capacity: 57668 MW
Change to previous index version 18/04: + 1505 MW (+2.68%)

Total installed onshore capacity: 52281 MW (90.66%)
Change to previous index version 18/04: + 1505 MW

Total installed offshore capacity: 5387 MW (9.34%)
Change to previous index version 18/04: + 0 MW

Onshore / Offshore Relation 18/10: 90.66% / 9.34%

Onshore / Offshore Relation 18/04: 90.41% / 9.59%

Source of Data: Bundesverband Windenergie e.V. / Deutsche Windguard

Link: <https://www.wind-energie.de/themen/statistiken>

Statistical properties:

Yearly Average (2006 to 2015) version 18/10: 22.79 %

Yearly Average (2006 to 2015) version 18/04: 22.35 %

Source of Data: StormGeo reanalysed dataset

Geographical Distribution:

Region	Capacity [MW] 18/10	Capacity [MW] 18/04	Capacity [MW] 17/10	Growth [MW]	Growth [%]	Share [%] 18/10	Share [%] 18/04
Offshore	5387	5387	4749	0	0,0%	9,3%	9,6%
North	21521	21000	19933	521	2,6%	37,3%	37,4%
East	14894	14924	14114	-30	-0,2%	25,8%	26,6%
West	11849	10917	10401	932	9,0%	20,5%	19,4%
South	4017	3935	3575	82	2,3%	7,0%	7,0%

Regions:

Offshore: North Sea and Baltic Sea

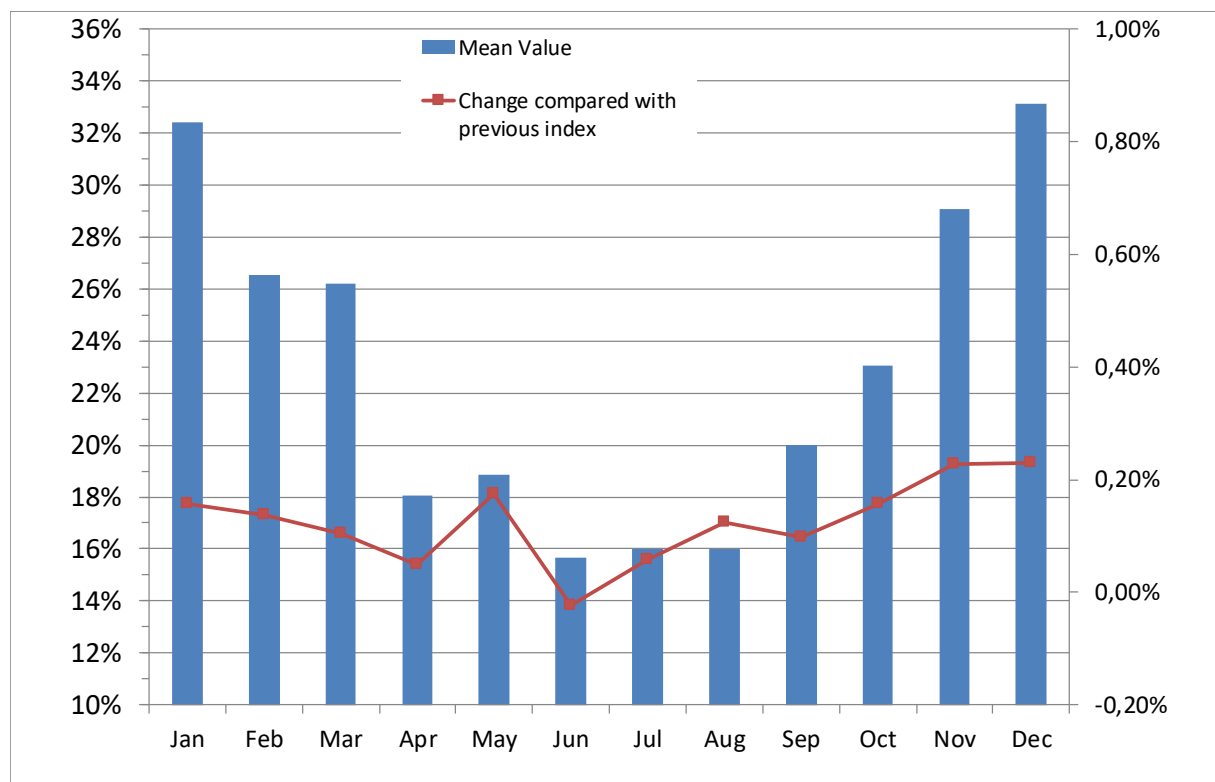
North: Lower Saxony, Schleswig-Holstein, Mecklenburg-Western Pomerania, Bremen, Hamburg

East: Brandenburg, Saxony Anhalt, Thuringia, Saxony, Berlin

West: North Rhine – Westphalia, Hessen, Rhineland-Palatinate, Saarland

South: Baden-Württemberg, Bavaria

Monthly Normals (Reference: 2006 to 2015):



Hourly index value conversion file available on request. Please contact konstantin.lenz@nasdaq.com